

MULTISTAKEHOLDER FORUM
Investing in Healthy and Active Aging for Sustainable Growth
A Regional Approach to Promoting Innovative Long-Term Care
15th August 2017
New World Saigon Hotel, Ho Chi Minh City, VIETNAM

Session 3
A Regional Approach to Capacity Development and
the Cross-Border Movement of Care Workers
Introduction

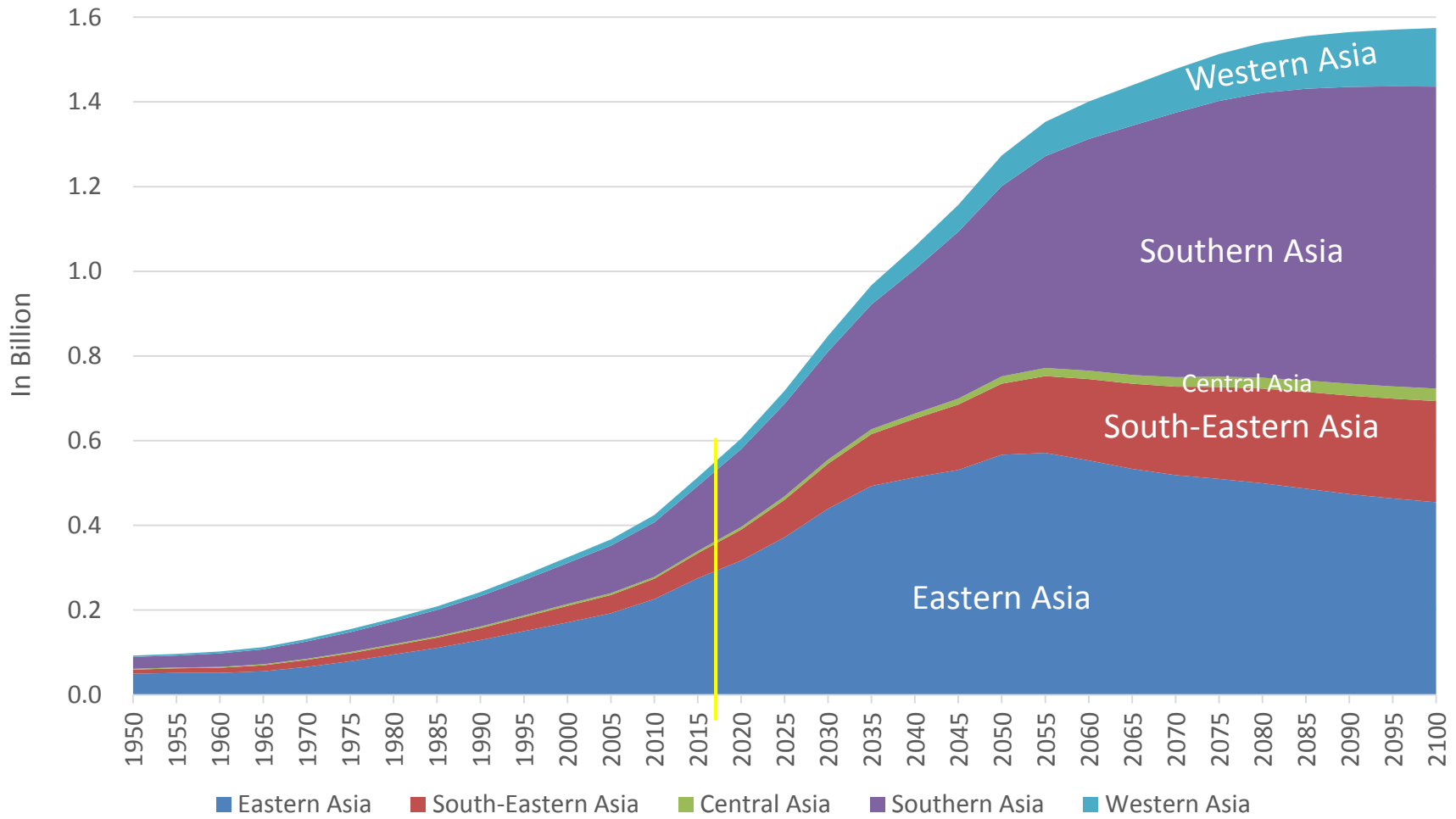
Moderator : Reiko Hayashi



National Institute of Population and Social Security Research, Japan

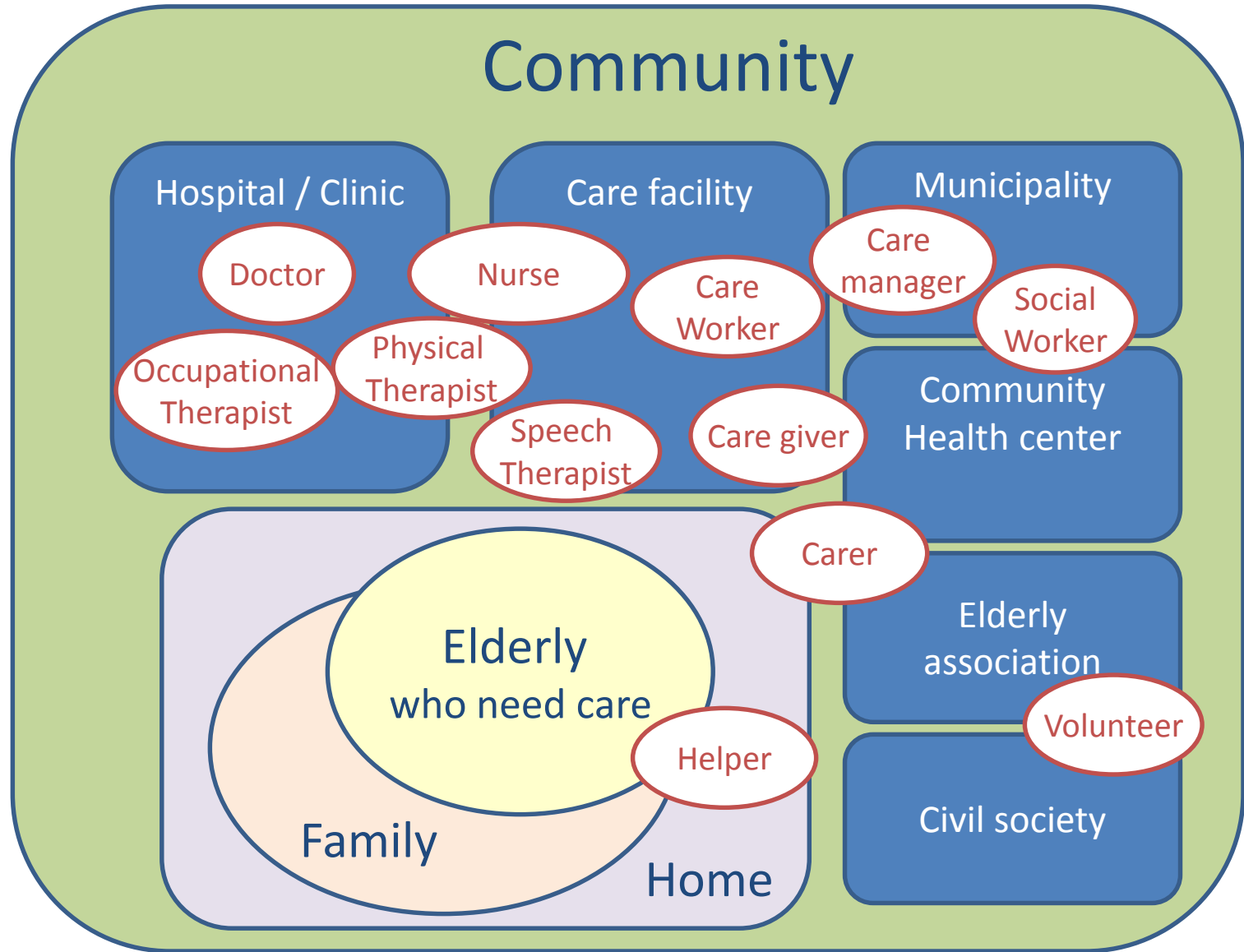
hayashi-reiko@ipss.go.jp

Explosion of elderly population 60+ population in Asia



Source : United Nations, Department of Economic and Social Affairs, Population Division (2017).
World Population Prospects: The 2017 Revision, DVD Edition.

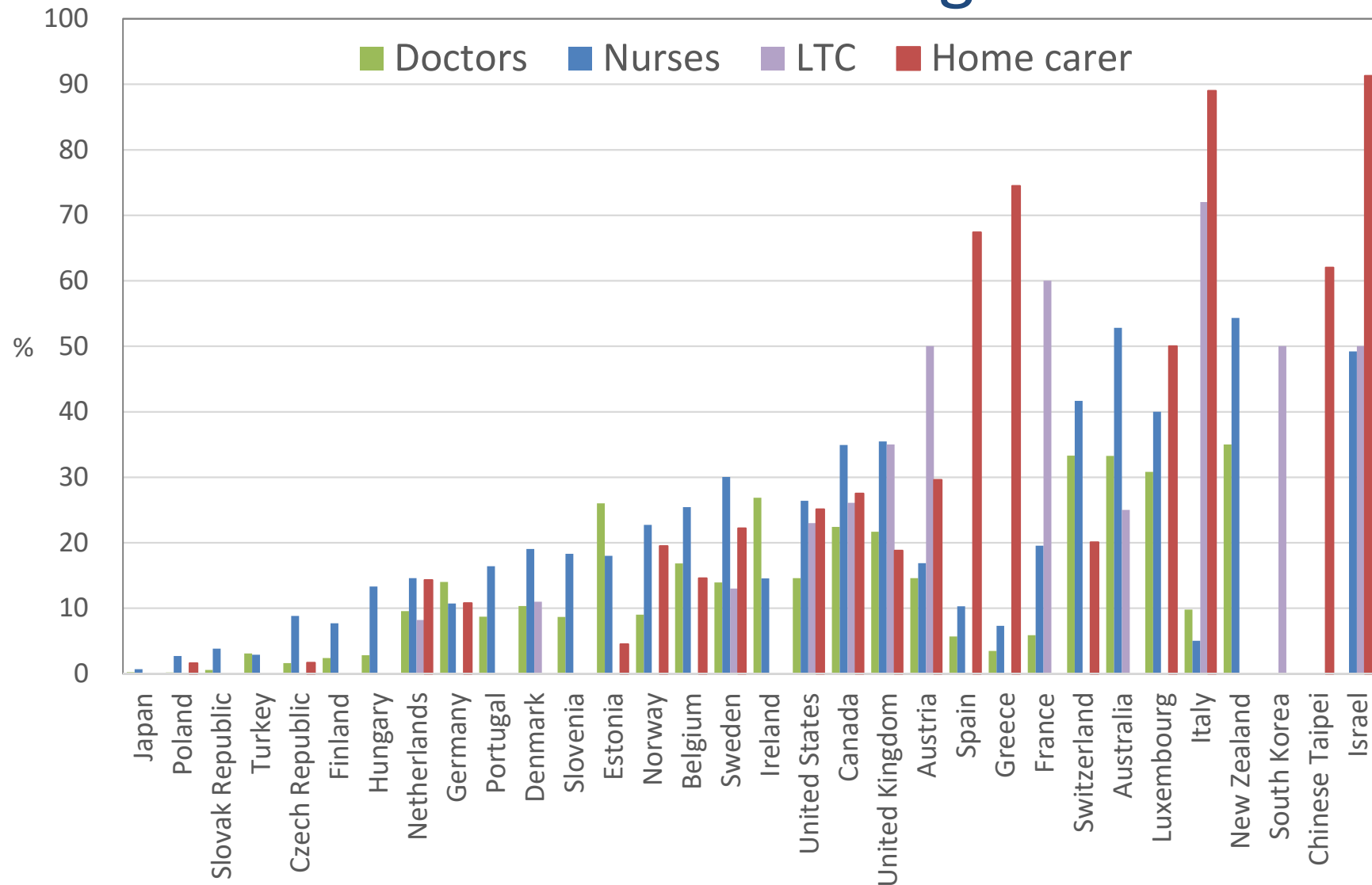
Community



Human resources for care

Proportion of foreign health and care personnel

Brain drain or brain gain?



Source: Data for doctors and nurses are around 2010/11 by OECD (2015) , For Long Term Care Worker and Home carer are by Colombo (2011), Fujisawa (2009), Song (2015), OECD(2015), Japan by Census 2010

Long term care human resource development in selected countries

	Fiji		Myanmar			Sri Lanka			Thailand			Viet nam
Title	Care giver	Orderlies Ward assistant	Volunteer		Staff in elderly homes	Elderly promotion officers	Care giver	Village health volunteer	Care manager	Care giver	Village health volunteer	Holy
License	Certificate FNU	none	Home care program	Self help group activities								
Job description	Support daily life	Support daily life	LTC at home	LTC for group	LTC at elderly homes	to plan and implement nation policy	provide elderly care	to support the mental and physical health	care plan development	Care for elderly	health check, rehabilitation, regular home visit	support daily life
Place of work	senior citizen center, home	Senior citizen center	Home	Village	Voluntary homes for the elderly	National secretariat for elders	Home, Hospital Elder home	Village	Sub-district office	Home	Village	Hospital, elderly care home
Training	1 full year	none	N/A	HelpAge	N/A	1 year research	3 months	2 weeks	70 hours	70 or 420 hours	43 hours	Equiv. primary
Continuous training	OJT by facility	OJT by facility	N/A	N/A	N/A	none	none	none	none	none	none	OJT by facility
Registration	none	none	N/A	N/A	N/A	Head office	Head office	Head office	Sub-district	Sub-district	Sub-district	none

Source : adapted from “S. Horii, S.Sugita, K.Taneda and T. Sone; Current situation and challenges on regulation of the long-term care worker in Asian and Pacific region”submitted to Japan global health joint conference 2017” supported by AMED Grant number 16jk0110004j0103

- 
- **Mr.Diono Susilo**, Head, Division of Empowerment of Foreign Human Resources for Health, Board of Development and Empowerment, Human Resource for Health, Ministry of Health, **Indonesia**
 - **Mr.Suvinda Samarakoon Singappuli**, Director, National Secretariat for Elders, Ministry of Social Empowerment and Welfare, **Sri Lanka**
 - **Mr.Juan Antonio A. Perez III**, Executive Director, Commission on Population, **Philippines**
 - **Ms.Pham Thi Quynh Huong**, Division for Japan-Europe and Southeast Asia, Department of Overseas Labor (DOLAB), Ministry of Labour, Invalids and Social Affairs (MOLISA), **Viet Nam**
 - **Mr.Wako Asato**, Associate Professor, Graduate School of Letters, Kyoto University, **Japan**